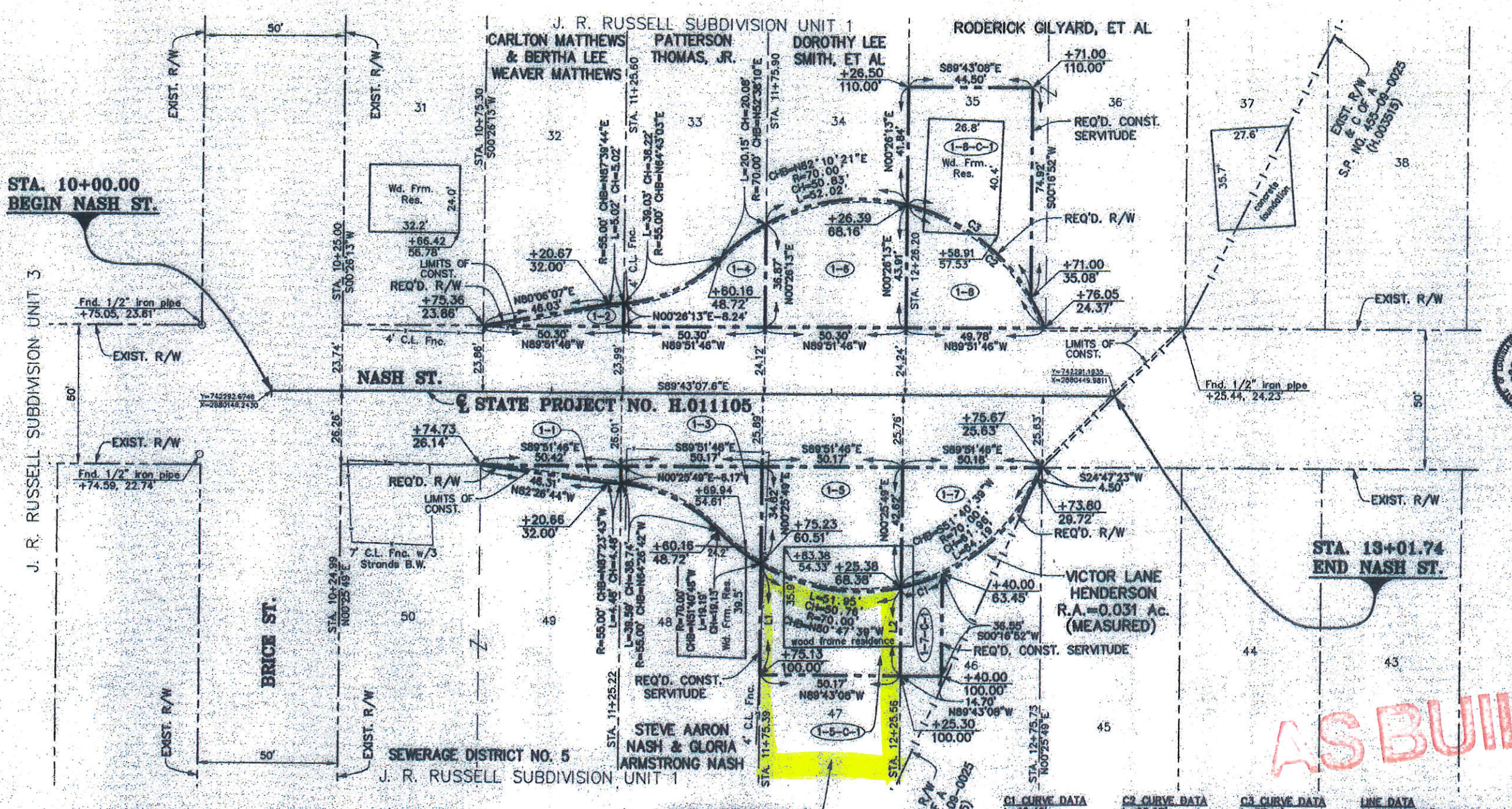


NORTHWESTERN LAND DISTRICT
T18N-R14W
SECTION 21



STA. 10+00.00
BEGIN NASH ST.

STA. 13+01.74
END NASH ST.

PARCEL	OWNER	ACQUISITION	AREA
1-8-C-1	RODERICK GILYARD, ET AL	C.O.B. 4159, Pg. 472 NOVEMBER 14, 2008	0.055 Ac.
1-8	RODERICK GILYARD, ET AL	C.O.B. 2257, Pg. 50 JULY 29, 1985	0.034 Ac.
1-7-C-1	VICTOR LANE HENDERSON	C.O.B. 1822, Pg. 650 NOVEMBER 13, 1980	0.011 Ac.
1-7	VICTOR LANE HENDERSON	C.O.B. 2291, Pg. 496 NOVEMBER 25, 1985	0.033 Ac.
1-6	DOROTHY LEE SMITH, ET AL	C.O.B. 4257, Pg. 586 AUGUST 17, 2009	0.050 Ac.
1-5-C-1	VINSON HENDERSON & LOIS MAE QUARLES HENDERSON	C.O.B. 2954, Pg. 746 MARCH 11, 1994	0.037 Ac.
1-5	VINSON HENDERSON & LOIS MAE QUARLES HENDERSON	C.O.B. 969, Pg. 735 AUGUST 6, 1962	0.049 Ac.
1-4	PATTERSON THOMAS, JR.	C.O.B. 756, Pg. 288 MAY 24, 1955	0.022 Ac.
1-3	STEVE AARON NASH & GLORIA ARMSTRONG NASH	C.O.B. 3370, Pg. 410 FEBRUARY 1, 2000	0.020 Ac.
1-2	CARLTON MATTHEWS & BERTHA LEE WEAVER MATTHEWS	C.O.B. 961, Pg. 81 APRIL 13, 1962	0.005 Ac.
1-1	SEWERAGE DISTRICT #5	C.O.B. 966, Pg. 140 JUNE 20, 1962	0.004 Ac.
		C.O.B. 966, Pg. 138 JUNE 20, 1962	
		C.O.B. 948, Pg. 621 DECEMBER 4, 1961	

VINSON HENDERSON &
LOIS MAE QUARLES HENDERSON

LEGEND

- APPARENT PROPERTY LINE
- RIGHT OF WAY LINE
- RIGHT OF WAY & C OF A
- LIMITS OF CONSTRUCTION

C1 CURVE DATA	C2 CURVE DATA	C3 CURVE DATA	LINE DATA
L=15.46 CH=15.43' R=70.00' CHB=N71°37'04"E	L=88.97 CH=66.21' R=70.00' CHB=S48°18'55"E	L=57.11 CH=55.54' R=70.00' CHB=N53°10'07"W	L1=N00°25'49"E-39.49' L2=N00°25'49"E-31.62'

DJ Dineen
2/8/17

AS BUILT

- NOTES:
- ALL PIPES AND MONUMENTS SHOWN HEREON WERE FOUND.
 - THE COORDINATES & BEARINGS SHOWN HEREON ARE BASED ON LOUISIANA STATE PLANE COORDINATE SYSTEM, NORTH ZONE (NAD 83). TO CONVERT TO TRUE BEARINGS USE: $-00^{\circ}41'13.3''$
 - DISTANCES SHOWN ARE HORIZONTAL GROUND DISTANCES. TO CONVERT DISTANCES DERIVED FROM COORDINATES SHOWN HEREON TO HORIZONTAL GROUND DISTANCES, USE SCALE FACTOR: 1.000027570

COYLE ENGINEERING CO., INC.
BOSSIER CITY, LOUISIANA
(318) 746-8987

DATE: 12/18/2013
COMPUTED BY: CGC3
DRAWN BY: LYS
SCALE: 1"=20'
FILE NO: 02-18-1-062
RW SHEET NO. 1

STATE PROJECT NO. H.011105
CUL-DE-SACS @ I-18N-C-OF-A LINE
CADDOSH PARISH
L-4-P

RIGHT OF WAY MAP

FILE NO 02-18-1-062
RW SHEET NO 1